

# 620 WILSON AVENUE OFFICE SUITES FOR LEASE TORONTO, ONTARIO

# EMERY

INVESTMENTS



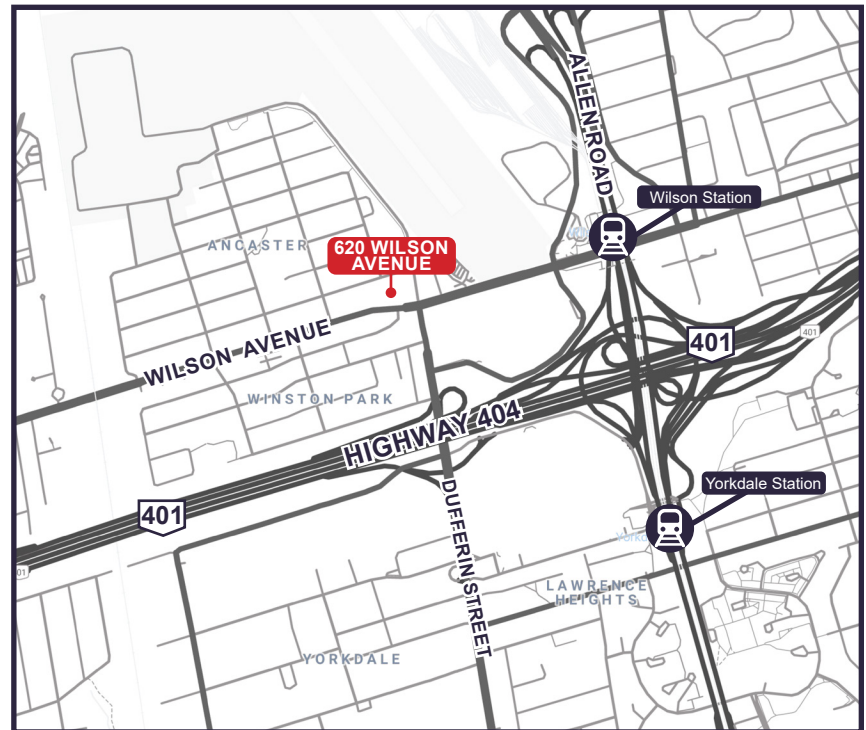
## AVAILABILITY INFORMATION

### AVAILABILITY:

Suite 100	2,856 sq. ft.	Immediate Occupancy
Suite 225	1,323 sq. ft.	Available February 2022
Suite 300	2,368 sq. ft.	Immediate Occupancy

### FEATURES:

- Excellent access to Highway 401 and Allen Road Expressway
- Parking ratio of 3 cars per 1,000 SF
- Free surface parking for visitors
- Both TTC and GO Transit service at doorstep
- Yorkdale Mall, Costco, and Home Depot within walking distance
- Ten thermostatically controlled zones per floor
- On site management office



## FOR MORE INFORMATION, PLEASE CONTACT:

**Elana Quinn**  
416-630-6932  
equinn@emeryinvestments.com

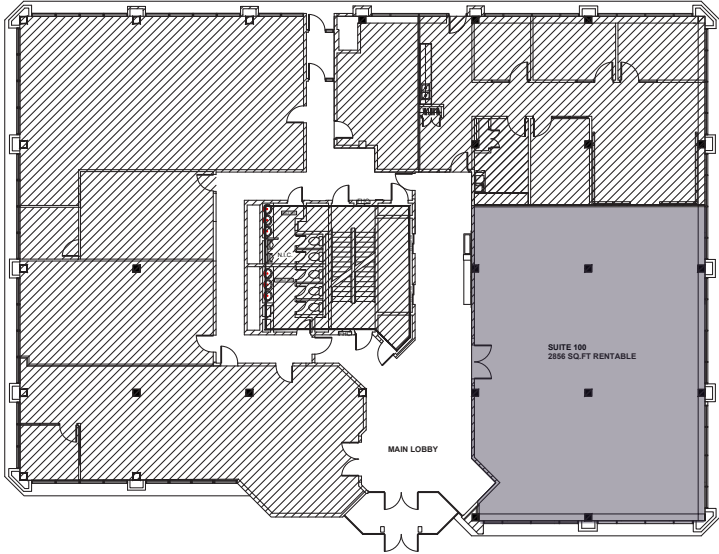
**Katharine Giovannetti**  
416-630-6939  
kgiovannetti@emeryinvestments.com

**Emery Investments**  
info@emeryinvestments.com  
www.emeryinvestments.com

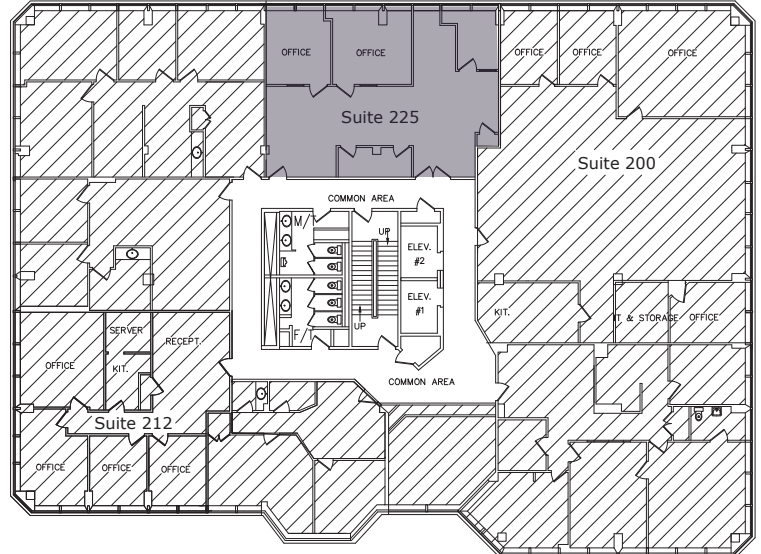
# 620 WILSON AVENUE OFFICE SUITES FOR LEASE TORONTO, ONTARIO

# EMERY

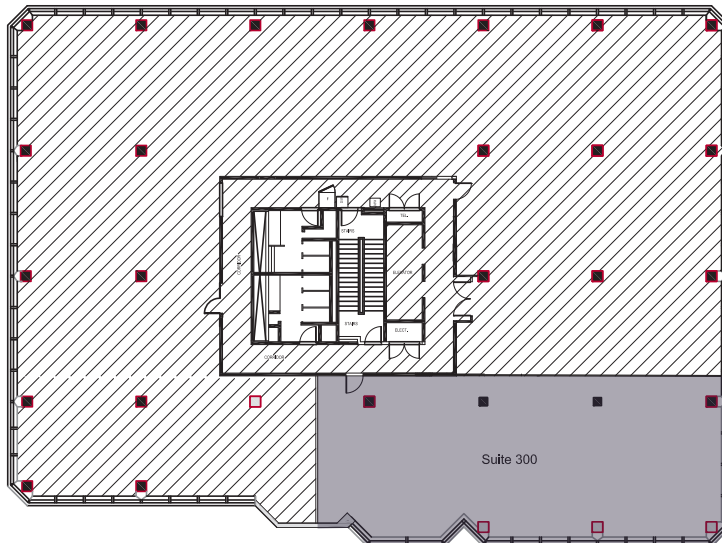
INVESTMENTS



**Suite 100 - 2,856 sq. ft.**



**Suite 225 - 1,323sq. ft.**



**Suite 300 - 2,368 sq. ft.**

## FOR MORE INFORMATION, PLEASE CONTACT:

**Elana Quinn**  
416-630-6932

[equinn@emeryinvestments.com](mailto:equinn@emeryinvestments.com)

**Katharine Giovannetti**

416-630-6939

[kgiovannetti@emeryinvestments.com](mailto:kgiovannetti@emeryinvestments.com)

**Emery Investments**

[info@emeryinvestments.com](mailto:info@emeryinvestments.com)

[www.emeryinvestments.com](http://www.emeryinvestments.com)