

# 4903 THOMAS ALTON BOULEVARD

OFFICE SUITES FOR LEASE  
BURLINGTON, ONTARIO

**EMERY**  
INVESTMENTS



## AVAILABILITY INFORMATION

### AVAILABILITY:

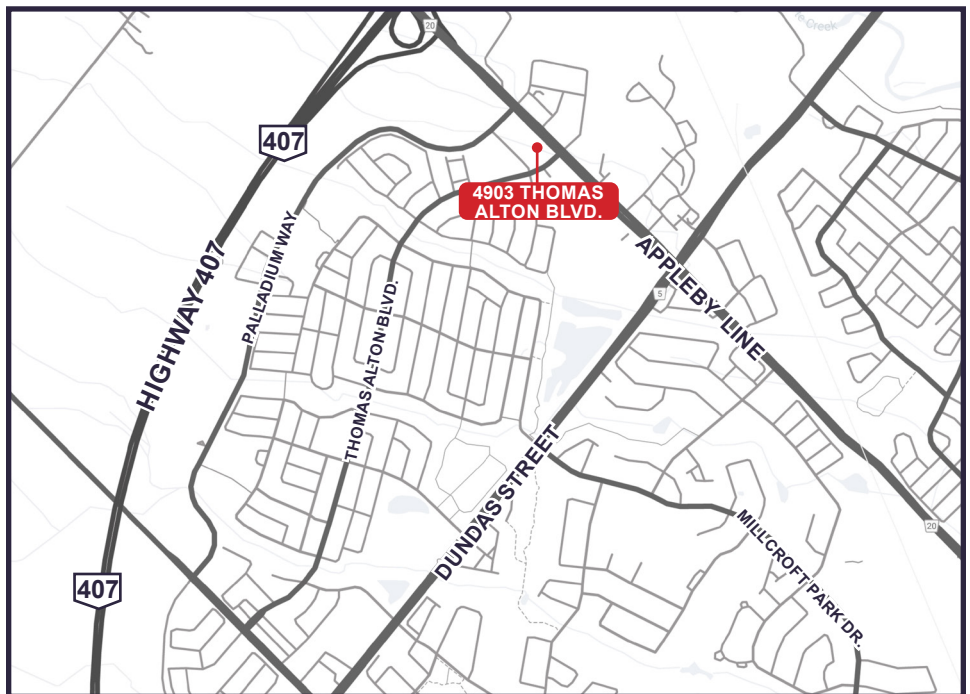
Suite 201	3,774 sq. ft.
Suite 202	1,642 sq. ft.
Suite 204	886 sq. ft.
Suite 205	1,007 sq. ft.
<b>Total:</b>	<b>7,309 sq. ft.</b>

### DESCRIPTION:

Fully built out second floor office suites.  
Move in ready.

### POSSESSION:

Immediate Occupancy



## FOR MORE INFORMATION, PLEASE CONTACT:

**Elana Quinn**  
416-630-6932

[equinn@emeryinvestments.com](mailto:equinn@emeryinvestments.com)

**Katharine Giovannetti**  
416-630-6939

[kgiovannetti@emeryinvestments.com](mailto:kgiovannetti@emeryinvestments.com)

**Emery Investments**

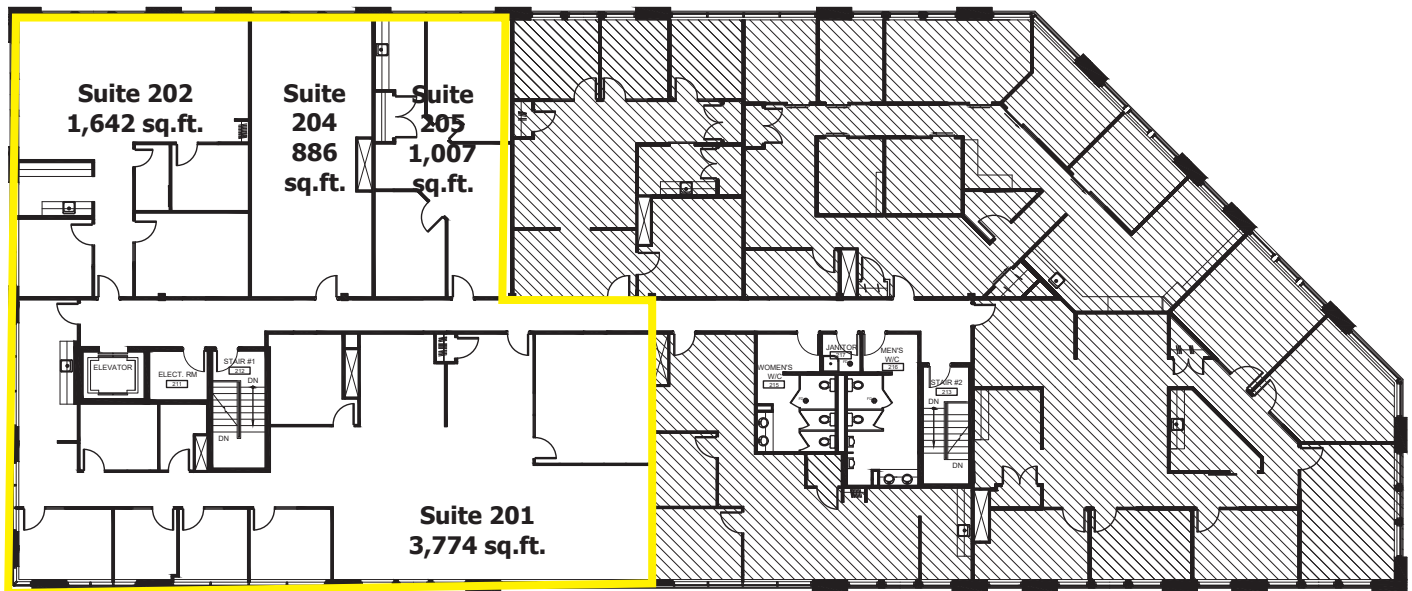
[info@emeryinvestments.com](mailto:info@emeryinvestments.com)

[www.emeryinvestments.com](http://www.emeryinvestments.com)

# 4903 THOMAS ALTON BOULEVARD

OFFICE SUITES FOR LEASE  
BURLINGTON, ONTARIO

**EMERY**  
INVESTMENTS



— CONTIGUOUS TO 7,309 SQ. FT.

## FEATURES:

- Fully built out office suites with plenty of windows
- Move in ready
- Conveniently located at the interchange of Appleby Line and Highway 407
- Ample surface parking spaces for staff and visitors
- Close to many amenities including; restaurants, banks, gyms, and shopping

## FOR MORE INFORMATION, PLEASE CONTACT:

**Elana Quinn**  
416-630-6932

[equinn@emeryinvestments.com](mailto:equinn@emeryinvestments.com)

**Katharine Giovannetti**

416-630-6939

[kgiovannetti@emeryinvestments.com](mailto:kgiovannetti@emeryinvestments.com)

**Emery Investments**

[info@emeryinvestments.com](mailto:info@emeryinvestments.com)

[www.emeryinvestments.com](http://www.emeryinvestments.com)