

4903 THOMAS ALTON BOULEVARD

OFFICE SUITES FOR LEASE
BURLINGTON, ONTARIO

EMERY
INVESTMENTS



AVAILABILITY INFORMATION

AVAILABILITY:

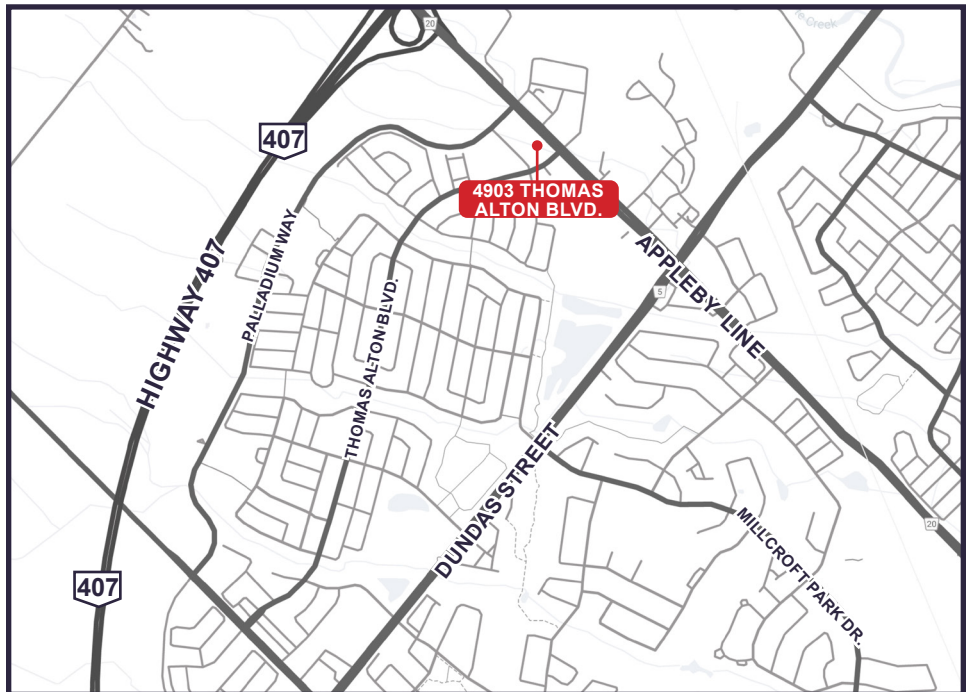
Suite 201	3,774 sq. ft.
Suite 202	1,642 sq. ft.
Suite 204	886 sq. ft.
Suite 205	1,007 sq. ft.
Suite 201-205	7,309 sq. ft.
Suite 209	3,073 sq. ft.

DESCRIPTION:

Fully built out second floor office suites.
Move in ready.

POSSESSION:

Immediate Occupancy



FOR MORE INFORMATION, PLEASE CONTACT:

Elana Quinn
416-630-6932

equinn@emeryinvestments.com

Katharine Giovannetti
416-630-6939

kgiovannetti@emeryinvestments.com

Emery Investments

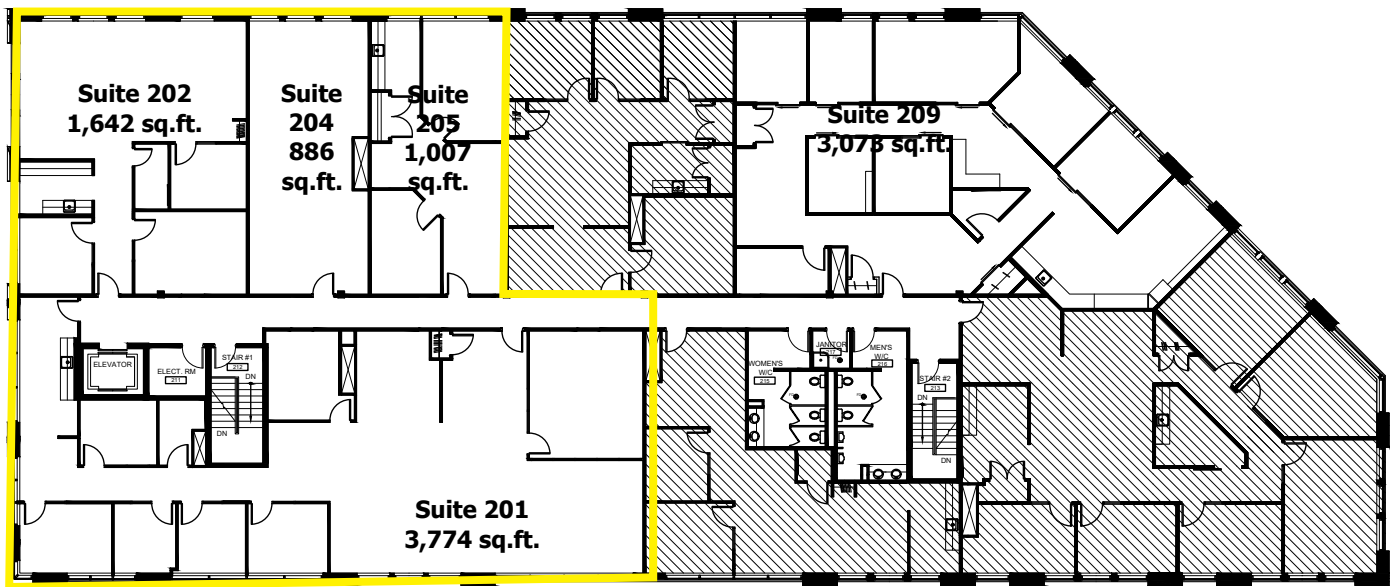
info@emeryinvestments.com

www.emeryinvestments.com

4903 THOMAS ALTON BOULEVARD

OFFICE SUITES FOR LEASE
BURLINGTON, ONTARIO

EMERY
INVESTMENTS



— CONTIGUOUS TO 7,309 SQ. FT.

FEATURES:

- Fully built out office suites with plenty of windows
- Move in ready
- Conveniently located at the interchange of Appleby Line and Highway 407
- Ample surface parking spaces for staff and visitors
- Close to many amenities including; restaurants, banks, gyms, and shopping

FOR MORE INFORMATION, PLEASE CONTACT:

Elana Quinn
416-630-6932

equinn@emeryinvestments.com

Katharine Giovannetti
416-630-6939

kgiovannetti@emeryinvestments.com

Emery Investments

info@emeryinvestments.com

www.emeryinvestments.com