

500 HOOD ROAD OFFICE SUITES FOR LEASE MARKHAM, ONTARIO

EMERY

INVESTMENTS



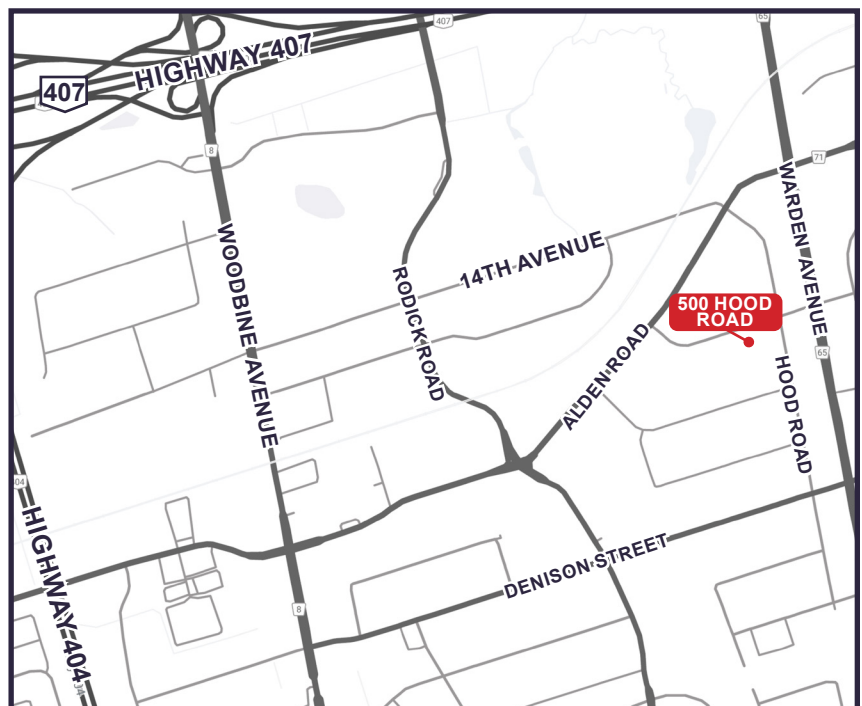
AVAILABILITY INFORMATION

AVAILABILITY:

| | | |
|-----------|---------------|--------------|
| Suite 300 | 3,633 sq. ft. | } Contiguous |
| Suite 404 | 2,113 sq. ft. | |
| Suite 405 | 6,412 sq. ft. | |

DESCRIPTION:

- Excellent access to Highways 407, 401, 404, and the Don Valley Parkway
- Both TTC and York Region Transit service at doorstep
- Hotels, restaurants, and fitness clubs in close proximity
- Card access for underground parking garage
- Parking ratio of 3 cars per 1,000 sq. ft.
- Free surface parking for visitors
- Multi-zone heat pump system provides flexible individual thermostat control
- Available for immediate occupancy



FOR MORE INFORMATION, PLEASE CONTACT:

Elana Quinn
416-630-6932
equinn@emeryinvestments.com

Katharine Giovannetti
416-630-6939
kgiovannetti@emeryinvestments.com

Emery Investments
info@emeryinvestments.com
www.emeryinvestments.com

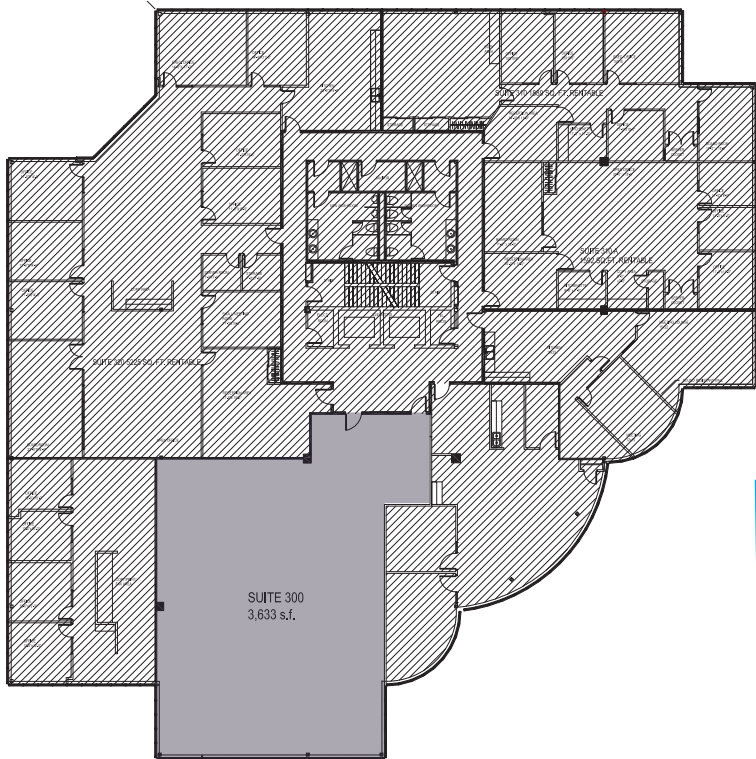
500 HOOD ROAD

OFFICE SUITES FOR LEASE

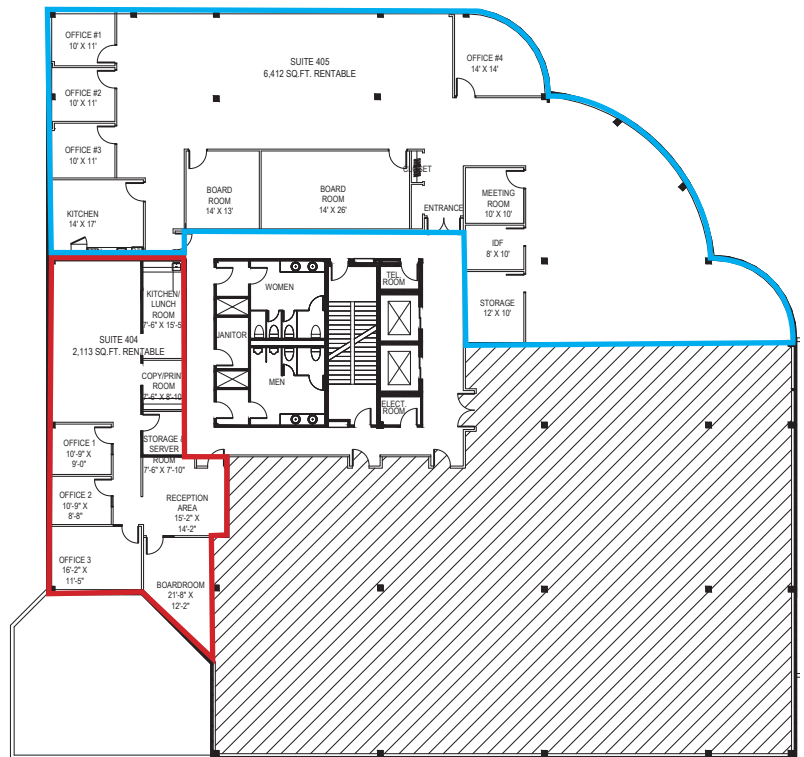
MARKHAM, ONTARIO

EMERY

INVESTMENTS



Suite 300 - 3,633 sq. ft.



Suite 404 - 2,113 sq. ft.

Suite 405 - 6,412 sq. ft.

Total - 8,525 sq. ft.

FOR MORE INFORMATION, PLEASE CONTACT:

Elana Quinn
416-630-6932

equinn@emeryinvestments.com

Katharine Giovannetti
416-630-6939

kgiovannetti@emeryinvestments.com

Emery Investments

info@emeryinvestments.com

www.emeryinvestments.com