

# 500 HOOD ROAD OFFICE SUITES FOR LEASE MARKHAM, ONTARIO

# EMERY

INVESTMENTS



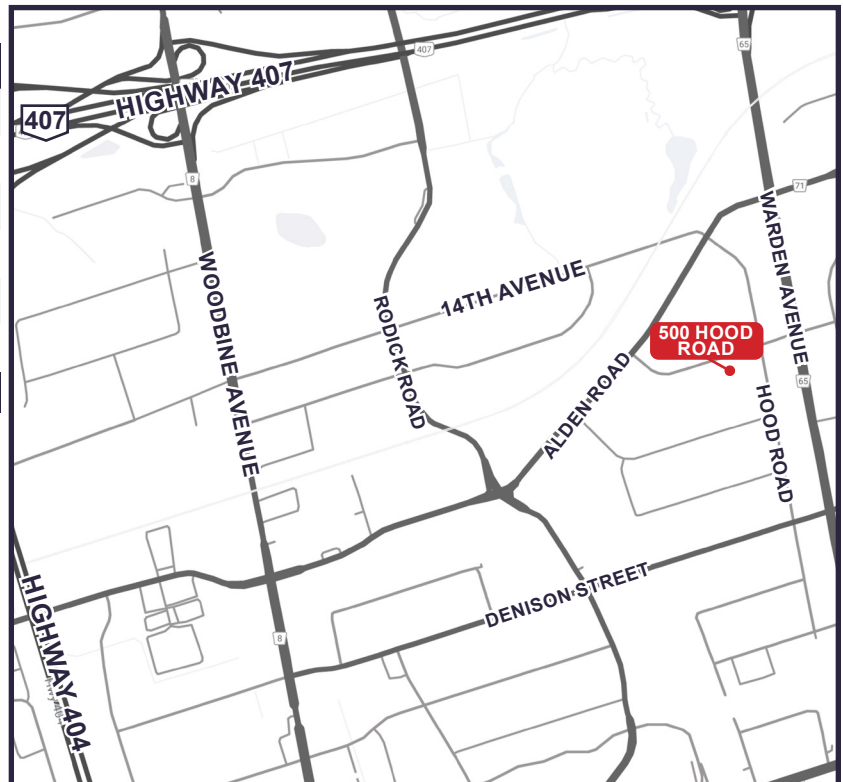
## AVAILABILITY INFORMATION

### AVAILABILITY:

Suite 200	18,508 sq. ft.	Immediate Availability
Suite 300	3,633 sq. ft.	Immediate Availability
Suite 320	3,807 sq. ft.	Immediate Availability
Suite 325	5,624 sq. ft.	Immediate Availability
Suite 320-325	9,431 sq. ft.	Immediate Availability
Suite 405	6,412 sq. ft.	Immediate Availability

### DESCRIPTION:

- Excellent access to Highways 407, 401, 404, and the Don Valley Parkway
- Both TTC and York Region Transit service at doorstep
- Hotels, restaurants, and fitness clubs in close proximity
- Card access for underground parking garage
- Parking ratio of 3 cars per 1,000 sq. ft.
- Free surface parking for visitors
- Multi-zone heat pump system provides flexible individual thermostat control



## FOR MORE INFORMATION, PLEASE CONTACT:

**Elana Quinn**  
416-630-6932  
equinn@emeryinvestments.com

**Katharine Giovannetti**  
416-630-6939  
kgiovannetti@emeryinvestments.com

**Emery Investments**  
info@emeryinvestments.com  
www.emeryinvestments.com

# 500 HOOD ROAD

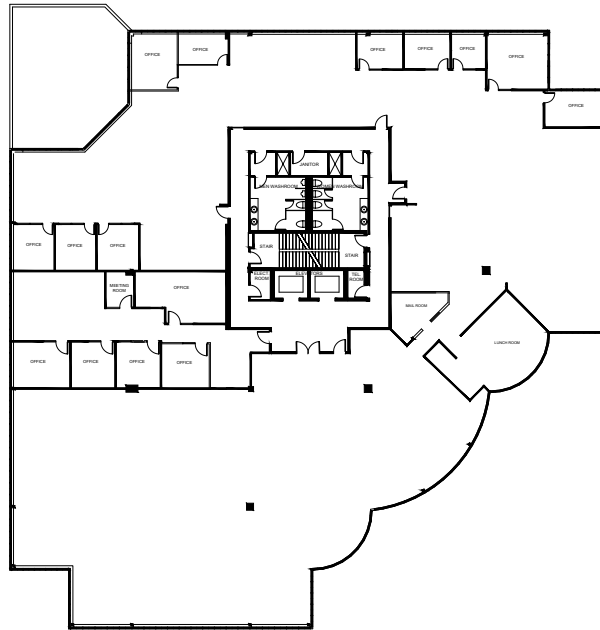
## OFFICE SUITES FOR LEASE

### MARKHAM, ONTARIO

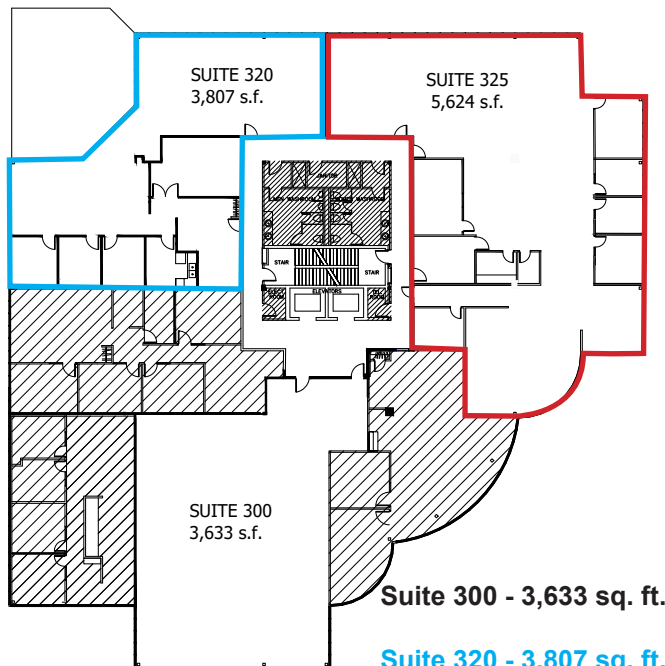
# EMERY

INVESTMENTS

#### FLOOR PLANS



Suite 200 - 18,508 sq. ft.

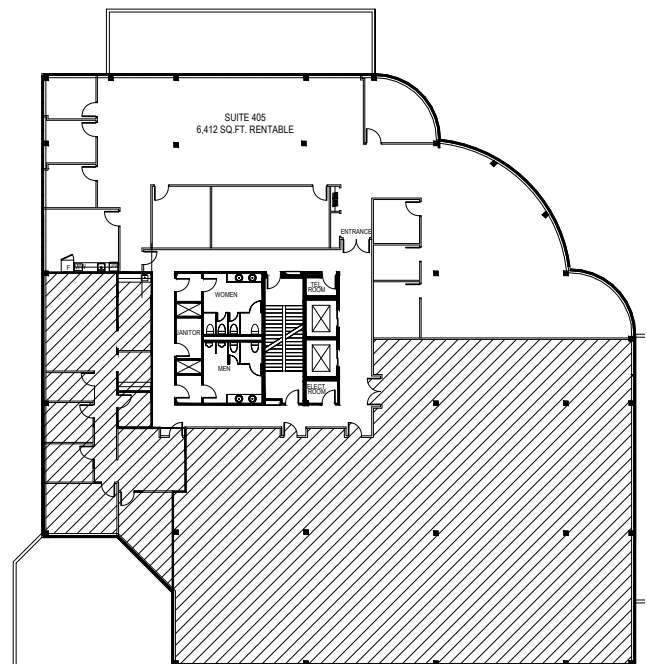


Suite 300 - 3,633 sq. ft.

**Suite 320 - 3,807 sq. ft.**

**Suite 325 - 5,624 sq. ft.**

**Total - 9,431 sq. ft.**



Suite 405 - 6,412 sq. ft.

#### FOR MORE INFORMATION, PLEASE CONTACT:

**Elana Quinn**  
416-630-6932

[equinn@emeryinvestments.com](mailto:equinn@emeryinvestments.com)

**Katharine Giovannetti**  
416-630-6939

[kgiovannetti@emeryinvestments.com](mailto:kgiovannetti@emeryinvestments.com)

**Emery Investments**

[info@emeryinvestments.com](mailto:info@emeryinvestments.com)

[www.emeryinvestments.com](http://www.emeryinvestments.com)